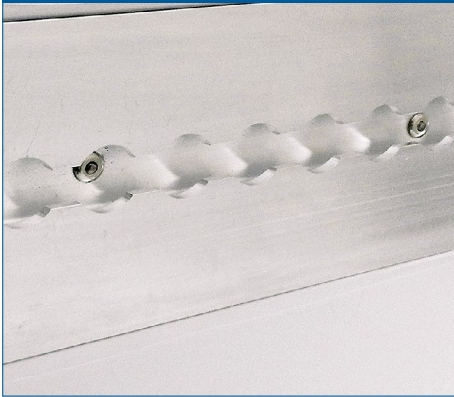


## Cargo tracks

- > up to four rows in case of recessed tracks
- > Certificate for the kit according to DIN EN12 642 XL possible

> airline tracks



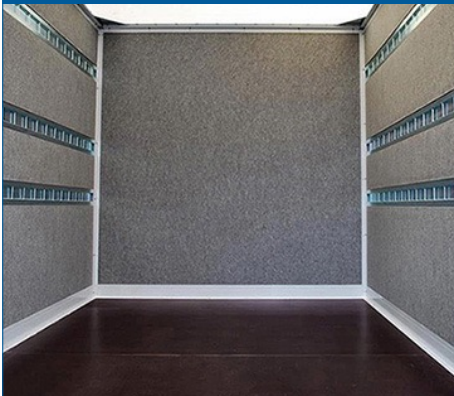
circulating in the ground (always!)



recessed in the walls (GRP-Foam)



> lashing rails



recessed (AluFoam®-light)



surface-mounted



> snap-in tracks



recessed (AluFoam®-light)



surface-mounted

